



# Expandable LeMaitre<sup>®</sup> Valvulotome

Self-Sizing and Self-Centering  
for More Effective Valvulotomy

# Expandable LeMaitre® Valvulotome

## “THE INSTRUMENT OF CHOICE”\* IN VALVULOTOMY

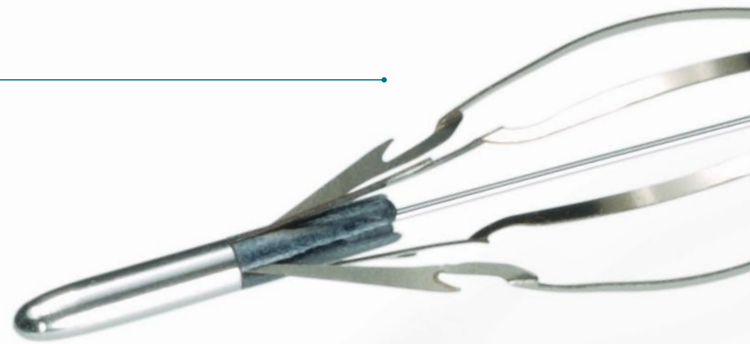
The Expandable LeMaitre Valvulotome is an innovative instrument that uses unique self-sizing, self-centering hoops for well positioned, clean valve ablation, decreased wound necrosis, and faster patient recovery. A recent study in the Journal of Vascular Surgery concluded that “blind valvulotomy with the expandable, self-sizing valvulotome facilitates safe and effective minimally invasive In Situ bypass.”\*\*

\* Connolly JE: In Situ Saphenous Vein Bypass-Forty Years Later. World J Surg. 2005 Apr 13.

\*\* Gangadharan SP, Reed AB, et al: Initial experience with minimally invasive in situ bypass procedure with blind valvulotomy. J Vasc Surg. 2002 Jun;35(6):1100-6.

\*\*\* Schanzer H, Skladany M: Evaluation of Efficacy and Safety of Valvulotomes in an “Ex-vivo” In-situ Bypass Model. Vasc Surg 1998; 32:463-469.

With a **BLADE RANGE OF 1.8 – 6.0 mm**, the Expandable LeMaitre Valvulotome eliminates the need for multiple sizes of instruments, enabling effective valve cutting in more veins. Retract the sheath to deploy the four recessed blades to quickly cut cusps in a few smooth passes.



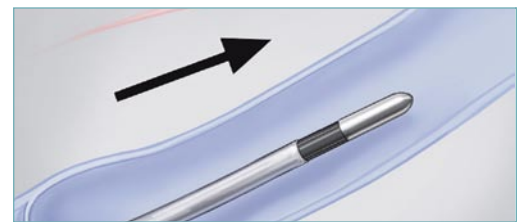
## HEAD TO HEAD EFFICACY OF VALVE LYSIS\*\*\*

89% Expandable LeMaitre Valvulotome

80% Competitor A

82% Competitor B

## USING THE EXPANDABLE LEMAITRE VALVULOTOME



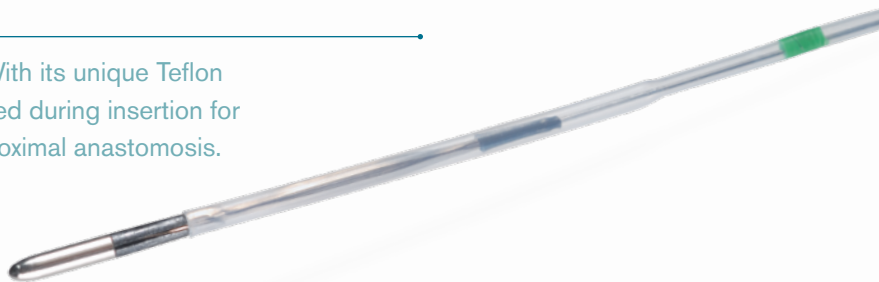
**STEP 1** Advance the valvulotome in the closed position 2 – 3 cm distal to the proximal anastomosis. The blades must be above the first set of competent valves.

### SELF-SIZING, SELF-CENTERING HOOPS

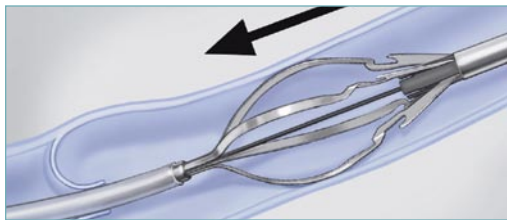
for optimal valve cutting.



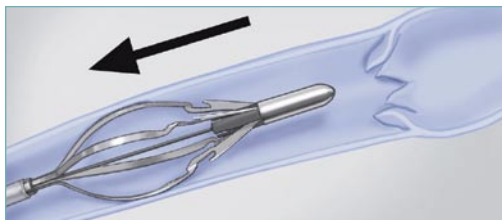
**ATRAUMATIC INSERTION** With its unique Teflon sheath, the blades remain closed during insertion for smooth advancement to the proximal anastomosis.



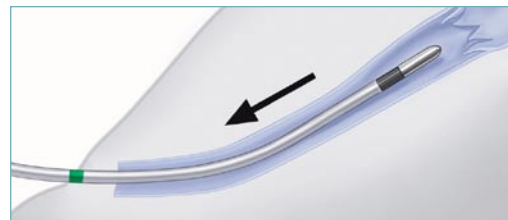
**IRRIGATION PORT** enables saline injections to ease device passage.



**STEP 2** Open the valvulotome and slowly withdraw the instrument through the saphenous vein.



**STEP 3** The self-sizing, self-centering hoops automatically adjust to vein diameter for optimal valve cutting.



**STEP 4** Close blades of valvulotome when green safety stripe appears outside of patient's saphenous vein before withdrawing the instrument. The green stripe is 3.5 cm distal to end of protective sheath.

# Expandable LeMaitre<sup>®</sup> Valvulotome



## ORDERING INFORMATION

	Model #
<b>Expandable LeMaitre Valvulotome</b>	
Expandable LeMaitre Valvulotome	1000-90
Expandable LeMaitre Valvulotome 5 Pack	1000-95

## VALVULOTOME SPECIFICATIONS

Maximum Hoop Diameter	Maximum Blade Diameter	Blade Housing Outer Diameter	Outer Diameter of Protective Sheath	Overall Length
9.0 mm	6.0 mm	1.8 mm	1.3 mm	110 cm

These specifications are not intended as a warranty. In the interest of product improvement, these specifications may be changed from time to time without notice. Please consult your sales representative for details.

**LeMaitre Vascular, Inc.**  
63 Second Avenue  
Burlington, MA 01803  
USA

T 781 221 2266  
F 781 221 2223

**LeMaitre Vascular GmbH**  
Otto-Volger-Str. 5a/b  
65843 Sulzbach/Ts.  
Germany

T +49 (0)6196 659230  
F +49 (0)6196 527072

**LeMaitre Vascular GK**  
1F Kubodera Twin Tower Bldg.  
2-9-4 Kudan-minami, Chiyoda-ku  
Tokyo, 102-0074  
Japan

T +81 (0)3 5215 5681  
F +81 (0)3 5215 5682

**For More Information:**  
Contact your local LeMaitre  
Vascular Sales Representative.

**For Customer Service:**  
Call 800 628 9470

